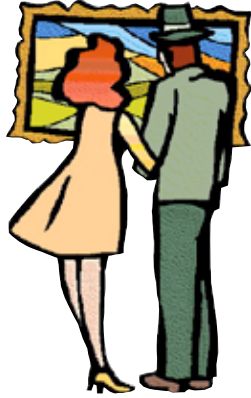


NEW Exhibition Venue

The exhibition will be at Harwood Library for the whole month of July. There is space for approx 32 artworks size 16 x 12ins including frame. More news will be published in due course so start your artworks now!



Notification of questions for inclusion at the AGM

Members wishing to raise a point to the committee at the AGM in April are asked to put the question in writing to the Secretary, Eileen Halliwell 32, Redwood, Westhoughton BL5 2RU or email eileenhalliwell@icloud.com by Friday March 17. Queries received after this date will not be on the Agenda at the AGM.



Debra Jones Workshop

ALL MATERIALS PROVIDED

There are still places available to attend Debra's workshop on Saturday, March 11 2023 from 11 am to 3pm at New Bury Community Centre, Buckley Lane, New Bury, Farnworth BL4 9PR. Price £18. See the notice at New Bury Community centre for latest details of availability.



RAFFLE of the MONTH



The March raffle is for this Fluid 100 watercolour block RRP approx £36 15 sheets 9 x 12 ins 140 lb 300 gsm

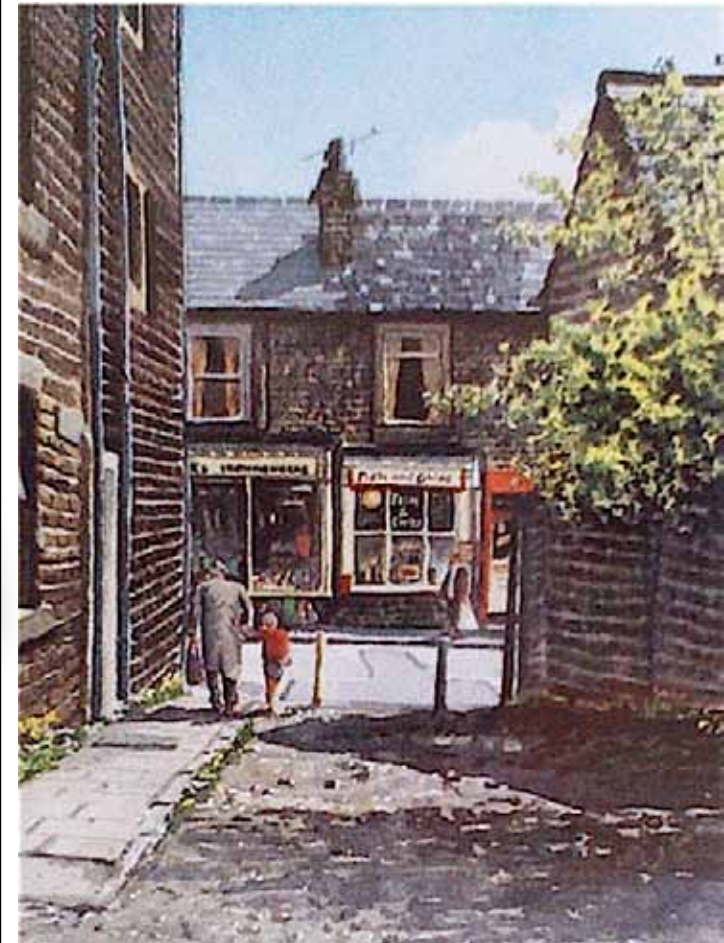
The February Raffle for the Mahlstick, was won by Lesley Taylor

The Fluid Watercolour Paper Collection was created specifically for the fine artist. This series of watercolour paper is crafted by our European mill partner with over 400 years of paper making experience. Fluid Watercolour Paper is produced at slow speeds for a stronger premium-quality paper. The Easy-Block method of binding allows paper to be used as a block or a pad. Fluid 100 Watercolour Paper is an archival 100% rag cotton paper that is gelatin-sized. 300gsm / 140lb. Hot press watercolour block.

In partnership with our sponsors Ken Bromley Art Supplies we will be offering a draw of art materials each month. To give all members a chance to enter, tickets will be sold at Monday, Wednesday, and Thursday workshops and at demonstrations during the demonstration season. The draw will be made on the last workshop of the month.

Tickets ONLY £1 each available at weekly workshops

Secretary's Challenge



The April challenge is to produce a picture of this scene by Geoff Butterworth. You can choose any medium you like and Geoff will pick the winner at his demonstration on the 11th of April so entries in by Monday the 10th April at the latest. Usual rules apply. There is a £10 cash prize for the winner.

Next Committee Meeting, Monday 20 March 3.30pm at New Bury Centre

