



Don't miss our annual Art Quiz and Potato Pie Supper! Only £5

This year to be held on Tuesday October 29th at the King's Head, 52-54 Junction Road, Bolton, BL3 4NA. There will be a vegetarian option available for those who prefer. Members and guests are welcome. £5 per person payable to Jean Steele. Please add your name to the list at Highfield. You can contact Jean on 01706 281349.

Artworks stolen at Bolton Royal

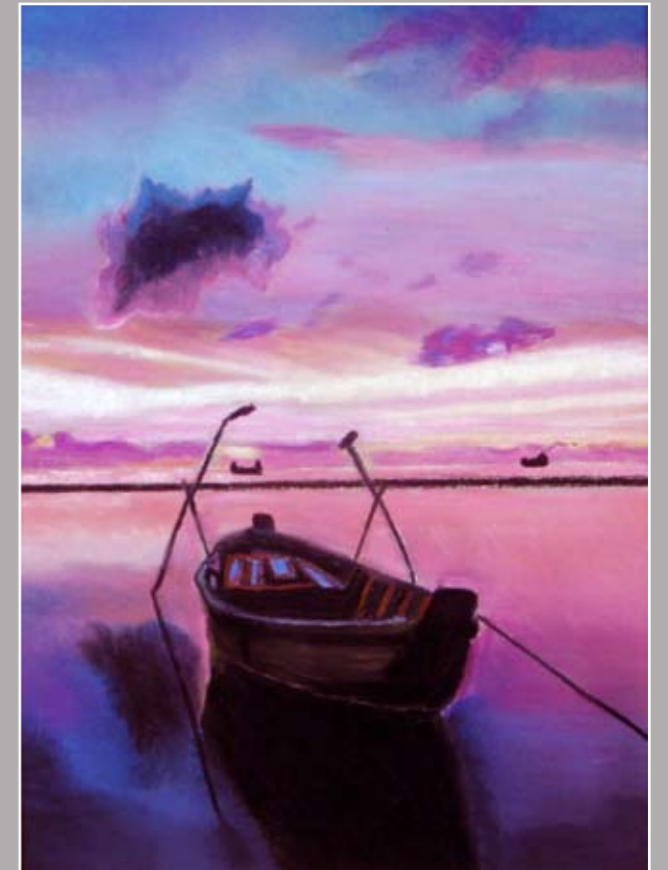
Some members will be aware that recently a couple of artworks have been stolen from Bolton Royal link corridor. Whilst Bolton Art Circle and Bolton Royal make every endeavour to secure the safety of exhibits, all members are reminded that artworks are displayed at their own risk.



Manchester Art Fair is one of the UK's most ambitious art fairs, selling modern and contemporary paintings, sculptures, photography and editioned prints from a selection of galleries and artists at the award winning Manchester Central on 12/13th October. Opening times are 10:00-18:00 Saturday and 10:00-17:00 Sunday. Admission £5

Secretary's Challenge

The winner of the September challenge was Eileen Halliwell, chosen by Debra Jones at her demonstration. Eileen's winning entry is shown here. Well done Eileen, now to the next challenge. As there is no demo in November the next challenge will be in December, and the subject will be anything related to Christmas in any medium you choose. The winner will be chosen by members at the workshops on Monday 16th Dec and Wednesday 18th Dec. The picture with the most votes wins. Don't sign your entry, write your name on the back. The winner receives £10.00



Events in the local area...

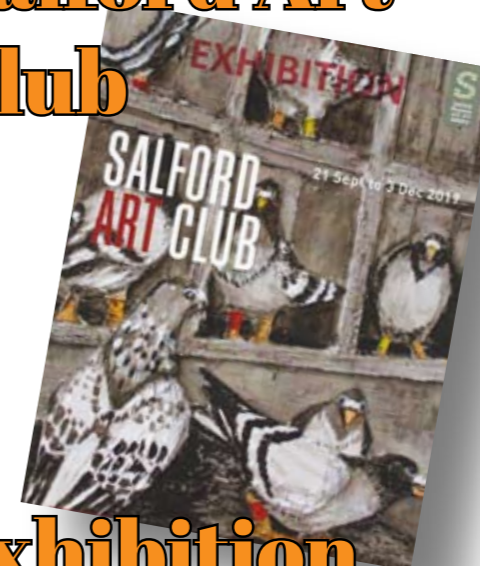
Bury Art Gallery Monday morning figure drawing

October 28th 10.00am 12.00am
Alternative untutored life drawing in a unique atmosphere. All ages and abilities welcome. Basic materials provided. Please note that the gallery is closed to the public on Mondays so please ensure you arrive before 10am.



Salford Art Club Exhibition

Sept 21st to December 3rd at Salford Museum and Art Gallery, The Crescent, Salford, M5 4WU Admission is FREE.



Horwich Art Society

Horwich Art Society will be holding their annual art exhibition at Horwich Library, Thursday 3rd October to Saturday 2nd November. The exhibition will be open during the Library's opening hours. Monday & Friday 9am to 5.30pm. Tuesday & Thursday 9am to 7pm. Wednesday 1pm to 5.30pm. Saturday 9am to 5pm. Admission: FREE