



▲ **Dan Thewlis** 'Somerset Lavendar' Acrylic on acrylic paper. Dan says 'My first attempt at a landscape and it was a pleasure to paint.' Well, it's also a pleasure to look at!



▲ **Eric Bromley** 'Lighthouse' Watercolour.



▲ **Eileen Halliwell** 'Three apples' Pastel pencils.

QUIZWORD ANSWERS

ACROSS 5. Matisse 8. Goya 11. Belgium 12. Eight 14. Picasso 15. Austria 16. Canaletto 18. Gormley
DOWN 1. Mexican 2. Liverpool 3. Rembrandt 4. Rodin 6. Pollock 7. Gauguin 9. Optical 10. Florence 13. Hogarth 17. Hopper

EDITOR'S FOOTNOTE Items for this publication should be sent by mail, email, or by hand to the Editor, David Halliwell, 32 Redwood, Westhoughton, Bolton, BL5 2RU. Tel 01942 840571. email hallid47@talktalk.net

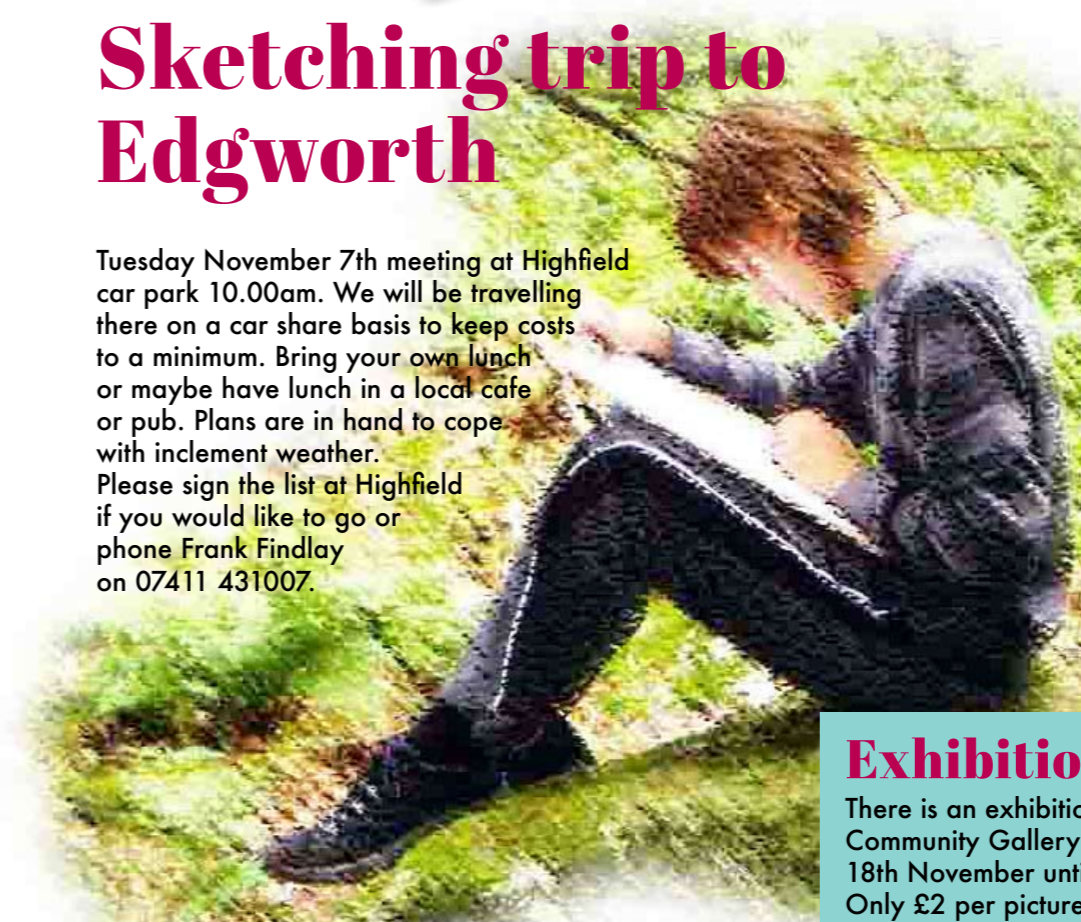


▼ **Irene Morgan**
Watercolour of a cockerel. To quote Irene "I like to try different styles in my paintings. Recently I have been challenging myself and attempting the elusive 'loose water colour' technique."



Sketching trip to Edgworth

Tuesday November 7th meeting at Highfield car park 10.00am. We will be travelling there on a car share basis to keep costs to a minimum. Bring your own lunch or maybe have lunch in a local cafe or pub. Plans are in hand to cope with inclement weather. Please sign the list at Highfield if you would like to go or phone Frank Findlay on 07411 431007.



Looking Ahead...

Bradley Fold Garden Centre in conjunction with Bee Morrison, are organising a series of workshops starting in January, more details will follow in December In Touch. In the meantime Bee will be doing a **FREE** demonstration on November 11th from 11.00am to 3.00pm. For more information telephone 0161 789 5591.

Exhibitions

There is an exhibition at Eccles Community Gallery from Saturday 18th November until January. Only £2 per picture to display with **NO COMMISSION!**

If you are interested contact Lesley Taylor on 0771 3008505 or 0161 7052450. You can take your paintings to Eccles on the 14th November or arrange with Lesley to collect at Highfield by 13th November. **Please contact Lesley first if you want to exhibit.**



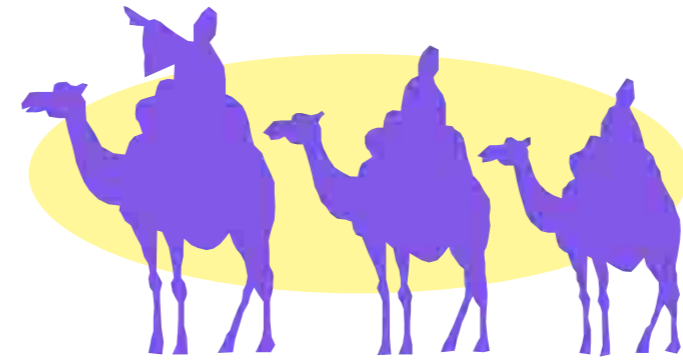
The main corridor changeover at Bolton Hospital will be end of November/early December. Actual dates will be confirmed shortly.

Donation to Charity

When Paul Titterton passed away the Circle was asked to raise as much money as they could by selling his remaining paintings with the proceeds going to the charity of his choice. Paul's artwork raised £415.00 which will be donated to the Diabetes Society. Bolton Art Circle committee also agreed to donate £35.00 to round the figure up to £450.00.

Secretary's Challenge

Aruna Mene took the honours in the Nikki Parmenter challenge, well done Aruna. For the next one George says "Using your skill, imagination and memories I would like you to design a Nativity Scene, suitable for a Christmas card and its maximum size should be 9x6 ins (240x165 mm). All the usual limitations apply in that you select the medium from the "hat". Entries close on 27th November by which time I should have received them."



They will be judged by a qualified person.