

Help to support Bolton Art Circle at the AGM

The AGM of Bolton Art Circle this year is on Thursday April 24th at New Bury Community Centre, Buckley Lane, New Bury, Farnworth BL4 9PR. Officers are up for election and there are some positions that need to be filled. This is your opportunity to get involved or have your say about issues you'd like to bring to the fore. Your presence is very important and the Committee look forward to seeing as many members as possible at the meeting.

To encourage members to attend there will be a raffle of original artwork donated by Ted Warburton at his March demonstration and tickets will only be available at the AGM.

Tickets will only be available on the evening of the AGM on 24th April

STOP PRESS

**Art in the Precinct confirmed for August.
Contact Lesley 07713 008505 for
Application Form**

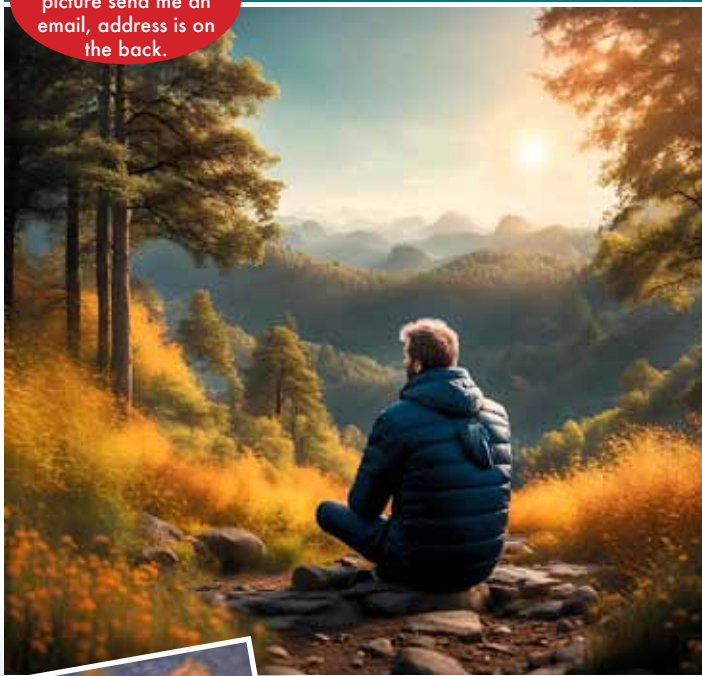
CHANGE OF DATE

Next Committee Meeting, Monday 14 April 3.30pm at New Bury Centre

14
APRIL
2025

If you would like a copy of this picture send me an email, address is on the back.

Secretary's Challenge



The April challenge is to produce a picture of this scene by. You can choose any medium you like and the winner will be chosen at the demonstration on the 8th of May so entries in by Wednesday the 7th May at the latest. There is a £10 cash prize for the winner. The usual rules apply but please don't frame or mount your artworks, write your name on the back of your work. Secretary's decision is final.

The winner of the March Challenge was Joan Warburton, who also won the January Challenge. Joans winning picture is shown on the left. Well done Joan!



Important notice for Committee members

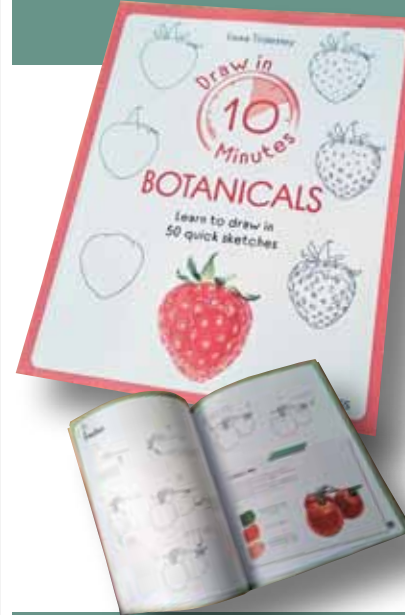
Will committee members indicate if they wish to continue in post or not. Anyone wishing to join the committee please write your name at the bottom of the form. The form will be available to view at workshops from Monday March 31st

Bolton Art Circle
Committee Membership
Information required prior to AGM on
Thursday April 24 2025
*Please tick yes or no if you wish to
continue in your post*

	Yes	No	Unknown	Willing to	Willing to
Chair					
Secretary					
Treasurer					
Publicity					
Education Officer					
Membership Officer					
Health & Safety					
Finance Officer					
Publicity Officer					
Education Officer					
Health & Safety					
Finance Officer					
Publicity Officer					
Education Officer					
Health & Safety					
Finance Officer					
Publicity Officer					
Education Officer					
Health & Safety					
Finance Officer					
Publicity Officer					
Education Officer					
Health & Safety					
Finance Officer					
Publicity Officer					
Education Officer					
Health & Safety					
Finance Officer					
Publicity Officer					
Education Officer					
Health & Safety					
Finance Officer					
Publicity Officer					
Education Officer					
Health & Safety					
Finance Officer					
Publicity Officer					
Education Officer					
Health & Safety					
Finance Officer					
Publicity Officer					
Education Officer					
Health & Safety					
Finance Officer					
Publicity Officer					
Education Officer					
Health & Safety					
Finance Officer					
Publicity Officer					
Education Officer					
Health & Safety					
Finance Officer					
Publicity Officer					
Education Officer					
Health & Safety					
Finance Officer					
Publicity Officer					
Education Officer					
Health & Safety					
Finance Officer					
Publicity Officer					
Education Officer					
Health & Safety					
Finance Officer					
Publicity Officer					
Education Officer					
Health & Safety					
Finance Officer					
Publicity Officer					
Education Officer					
Health & Safety					
Finance Officer					
Publicity Officer					
Education Officer					
Health & Safety					
Finance Officer					
Publicity Officer					
Education Officer					
Health & Safety					
Finance Officer					
Publicity Officer					
Education Officer					
Health & Safety					
Finance Officer					
Publicity Officer					
Education Officer					
Health & Safety					
Finance Officer					
Publicity Officer					
Education Officer					
Health & Safety					
Finance Officer					
Publicity Officer					
Education Officer					
Health & Safety					
Finance Officer					

In partnership with our sponsor **Bromleys Art Supplies**

RAFFLE of the MONTH



The April raffle is for this book 'Draw Botanicals in 10 minutes' by Emma Tildesley

RRP £9.99

Sketch 50 beautiful botanical projects, step by step, in just 10 minutes each! Create your own blowsy roses, delicate orchids, geometric succulents and glistening strawberries using these stunningly simple, easy-to-follow techniques. Guaranteed to boost your drawing confidence and skill, popular botanical artist Emma Tildesley uses simple shapes, built up step by step, so that you can quickly and easily sketch a gorgeous botanical collection.

Tickets ONLY £1 each available at weekly workshops and Demo's

Next Demonstration

Eric Bromley and Lesley Taylor

Demonstrating watercolour media

Thursday April 10th
7.30 - 9.30pm

at New Bury Community Centre, Buckley Lane, New Bury, Farnworth BL4 9PR
(please note, to enable the room to be set up it will be appreciated if attendees arrive no earlier than 7.15pm)

Members & guests welcome
£5.00 admission Refreshments provided

