

Notification of questions for inclusion at the AGM

Members wishing to raise a point to the committee at the AGM in April are asked to put the question in writing to the Secretary, Eileen Halliwell 32, Redwood, Westhoughton BL5 2RU or email eileenhalliwell@icloud.com by Tuesday March 8.

Queries received after this date will not be on the Agenda at the AGM.

We are looking for new committee members

If you would like to take an active role in running and organising Bolton Art Circle then why not become a committee member? We are always looking to bring fresh ideas to the club and maybe you could help. We currently need a Social Secretary to organise and manage trips to art galleries, exhibitions, and fairs. There are only a couple of trips a year and now that we are looking forward to life becoming more normal there is an opportunity for someone to bring a real benefit to the club. The committee meets once a month on the third Tuesday at Highfield from 6.30pm to 7.15pm to discuss important issues that affect everyone.

Bolton Art Circle news...

Bolton Food Festival

It looks likely that there will be a food festival in Bolton this year, but no news yet if the art circle will be attending. Lesley is in communication with the council organisers and will let us know what's happening as soon as she can.

Exhibition at Eccles

Eccles Community Gallery exhibition is now concluded, unfortunately no sales were made but there may be reasons for that. Footfall was light as people are still cautious about going out and the opening times were less than previous years. Thanks must go to Lesley for her involvement in organising this event and all the time she put into it.



Visiting artists

The demonstration season will be starting from next month concluding in October and Eric has signed up some new faces to look forward to.



News from the workshops

It's good to see that attendances at weekday workshops are slowly but surely improving as more members are returning to their hobby. Thursday evenings are still around 10 regular members so if you want to attend there's plenty of room! We need approx 15 members at each workshop to cover costs, if you are thinking of attending we would be delighted to see you.



Brian Thomas ex member

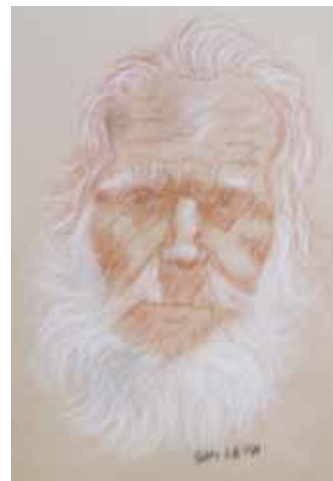
Roland had a call from ex-member Brian Thomas over Christmas. Both Brian and Judith are keen walkers and moved up to Cartmel in Cumbria a couple of years ago to be nearer the mountains. Sadly, Brian has been unable to find an art club that's as friendly as ours. He says they're all a bit too posh and snooty up there! He has had a rough patch with his health over the past year and was seriously ill with kidney problems last autumn. However, after spending several weeks in hospital he is now back to normal. He says he misses our Circle. We wish him and Judith good health in the future.



▲ Kevin Gillibrand 'Iconic Communications' Watercolour.



▲ Eileen Halliwell 'Big Ears' Pastel.



▲ Sam Leigh 'Pastel Portrait'

Bolton Art Circle

Picture Post



▲ David Halliwell 'Memories of Birmingham Snow Hill' Oils.

▼ Kath Rowlands 'Lighthouse Blues' 3D Acrylic.



SEND

your pictures to the editor for inclusion on this page

DETAILS ON BACK COVER