

In partnership with our sponsors Bromleys Art Supplies



# RAFFLE of the MONTH

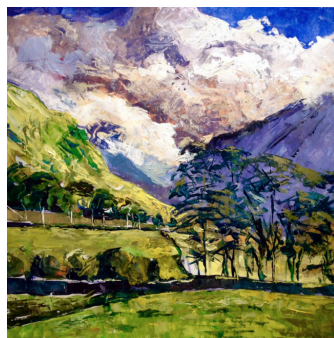


## Bockingford traditional watercolour paper

Bockingford® is a beautiful English watercolour paper, traditionally made on a cylinder mould machine at St Cuthberts Mill. This is a high quality paper made using pure materials to archival standards. The surface is created using natural woollen felts that give it a distinctive random texture. Known for its excellent colour lifting abilities. This is an extremely forgiving watercolour paper valued by professional and amateur artists around the world.

**VALUE APPROX £11**

Tickets ONLY £1 each available at weekly workshops and demos



**Announcing an Acrylic Landscape Workshop with Anthony Barrow on February 7 2026 ONLY £13.50**

At New Bury Community Centre. Tea and biscuits will be provided but bring your own lunch and materials

**ONLY 5 PLACES LEFT**

## Secretary's Challenge Winners in 2025



MARCH - Elaine Smith



APRIL - Sam Leigh



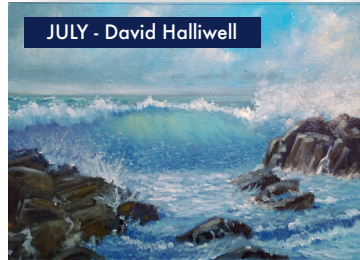
MAY - Aline Watson



JUNE - Paul Hilton



JULY - David Halliwell



AUGUST - Sam Leigh



Next Committee Meeting, Monday 15 January



SEPT- Jack Howarth

## Secretary's Christmas Challenge

NOW WITH  
**£20**  
CASH PRIZE!



The winner will be chosen by popular vote of members at the combined Christmas party on 17th December so entries in by Monday the 15th December at the latest. The usual rules apply but please don't frame or mount your artworks, write your name on the back. There is a £20 cash prize for the winner. Secretary's decision is final.

**THE CHRISTMAS PARTY THIS YEAR WILL BE FREE TO ALL MEMBERS WHO ATTEND**



There will only be one party this year on Wednesday 17 December. Food will be Potato Pie and Peas with Red Cabbage/Beetroot followed by Mince Pies and nibbles with Tea/Coffee or soft drinks. Put your name on the notice in the workshop room if you are going to the party. This is so we can order the correct quantity of meals, if your name isn't on the notice, you may miss out on the food!

### SECRET SANTA

If you would like to take part the maximum spend is £3, to be done on the 17th December at the party.

**Workshops will resume on January 5 2025**



**Bolton Council are hosting an Open Art Exhibition from February 14 to May 17 2026.**

Entries must be submitted on January 29 from 12 noon until 6.00pm or January 31 10am until 4.00pm. Up to two entries per person with a fee of £5 each entry, non returnable. A 30% commission will be taken for all sold artworks. Entry forms can be obtained at our workshops,